

**STATE OF RHODE ISLAND
COASTAL RESOURCES MANAGEMENT COUNCIL**

Oliver Stedman Government Center Suite 3
4808 Tower Hill Road
Wakefield, RI 02879-1900

PUBLIC NOTICE

The Coastal Resources Management Council (“CRMC”) is in receipt of a federal consistency certification filed electronically by Vineyard Wind LLC (Vineyard Wind) on April 6, 2018 for proposed construction of an approximately 800 megawatt (MW) wind energy project located in offshore waters south of Martha’s Vineyard, MA within BOEM Lease Area OCS-A 0501 (See attached figures). The project will consist of up to 106 offshore wind turbine generators (WTGs) (each placed on a foundation support structure) arranged in a grid-like pattern, electrical service platforms (ESP), an onshore substation, offshore and onshore cabling, and onshore operations & maintenance facilities (these facilities will hereafter be referred to as the Project). The Project also includes up to four (4) ESPs, inter-array cables connecting the WTGs to the ESPs, inter-link cables between ESPs, and up to three (3) offshore export cables. Each WTG will independently generate approximately 8 to 10 MW of electricity and will interconnect with the ESPs via the inter-array submarine cable system. The offshore export cable transmission system connects the ESPs to a landfall location in either Barnstable or Yarmouth, MA. The Project may be constructed in stages consisting of ~200 MW, ~400 MW, and ~800 MW with up to 5 years between increments.

Vineyard Wind has filed its Construction and Operations Plan (COP) with the Bureau of Ocean Energy Management (BOEM) for a federal license to construct and operate the proposed Project. BOEM issued a Notice of Intent to prepare an Environmental Impact Statement for the proposed Project on March 30, 2018. Additionally, on May 10, 2018 BOEM approved Vineyard Wind’s Site Assessment Plan (SAP) for Lease OCS-A 0501. The SAP approval allows for the installation of up to two Fugro SEAWATCH Wind LiDAR metocean buoys. Vineyard Wind’s federal COP and SAP along with other project information is available on the BOEM website at: <https://www.boem.gov/Vineyard-Wind/>.

Pursuant to 15 C.F.R. Part 930 Subpart D (Consistency for Activities Requiring a Federal License or Permit) the CRMC as the State’s authorized coastal zone management agency must make a determination as to whether the proposed project is consistent with the enforceable policies of the State’s federally approved coastal program, in particular the CRMC’s Ocean Special Area Management Plan. The CRMC’s six-month review period in this matter will end on October 6, 2018 in accordance with 15 C.F.R. § 930.60. Vineyard Wind’s consistency certification and supporting information have been assigned CRMC file number **2018-04-055** and can be reviewed at the CRMC office during regular office hours (Monday-Friday 8:30 am to 4:00 pm). In addition, a downloadable PDF file copy of Vineyard Wind’s consistency certification is posted on the CRMC website at www.crmc.ri.gov.

The CRMC is providing public notice on Vineyard Wind's consistency certification in accordance with 15 C.F.R. § 930.61. All interested parties are invited to submit written comments concerning the proposed Project on or before **June 25, 2018**. Comments should be specifically directed to the issue as to whether the proposed Project is consistent with the enforceable policies and standards of the Rhode Island Coastal Resources Management Program.

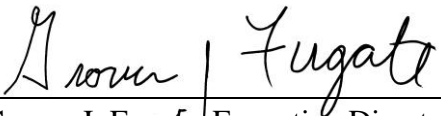
The CRMC will hold a public hearing in this matter on **September 25, 2018 at 6:00 p.m.** in Conference Room A at the Department of Administration, One Capitol Hill, Providence, RI.

Mailing Address for Public Comment Submissions:

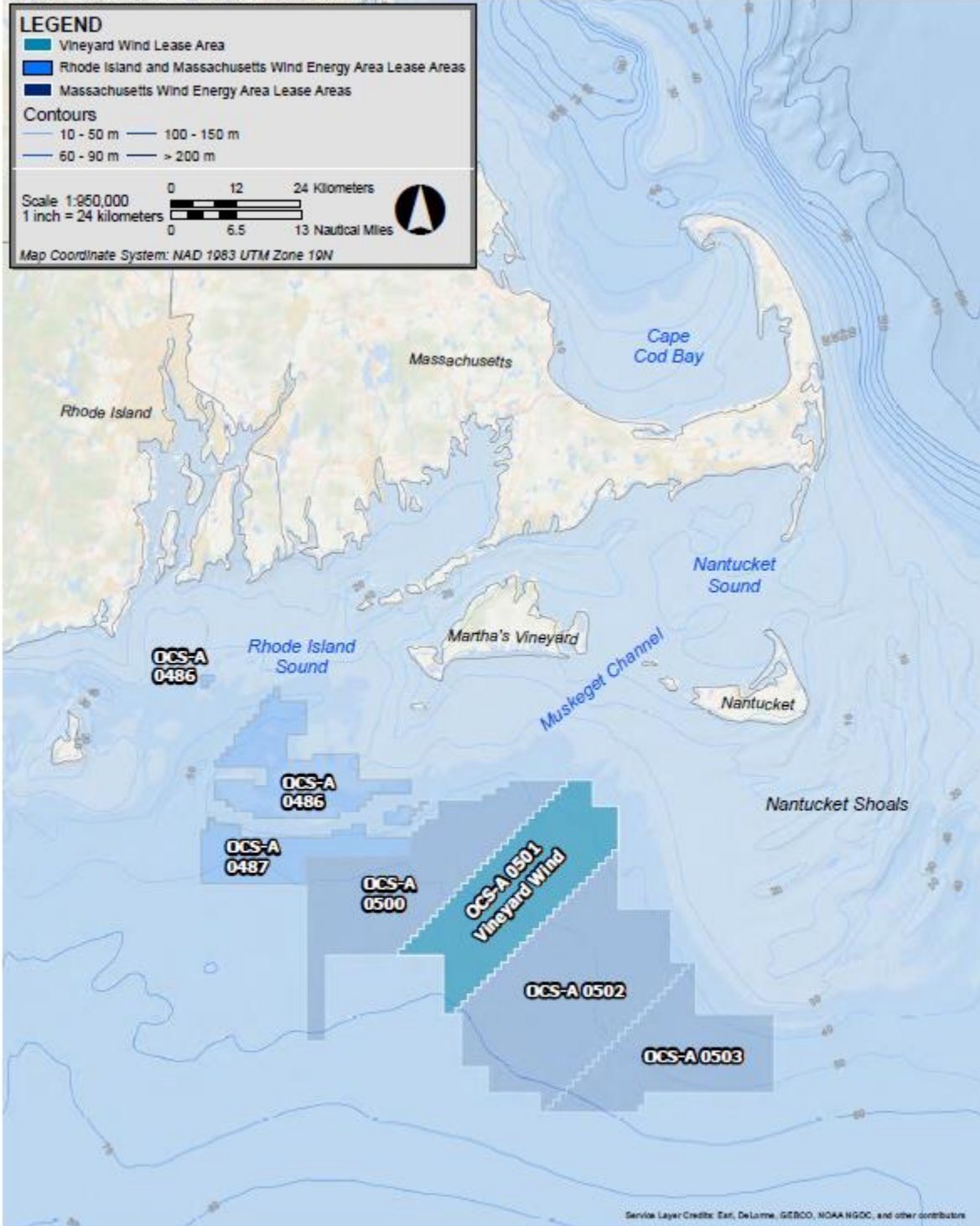
Coastal Resources Management Council
Stedman Government Center
4808 Tower Hill Road
Wakefield, RI 02879.
ATTN: Grover J. Fugate, CRMC Executive Director.

Comments may also be electronically filed with the CRMC at: cstaff1@crmc.ri.gov

Signed this 25th day of May 2018.



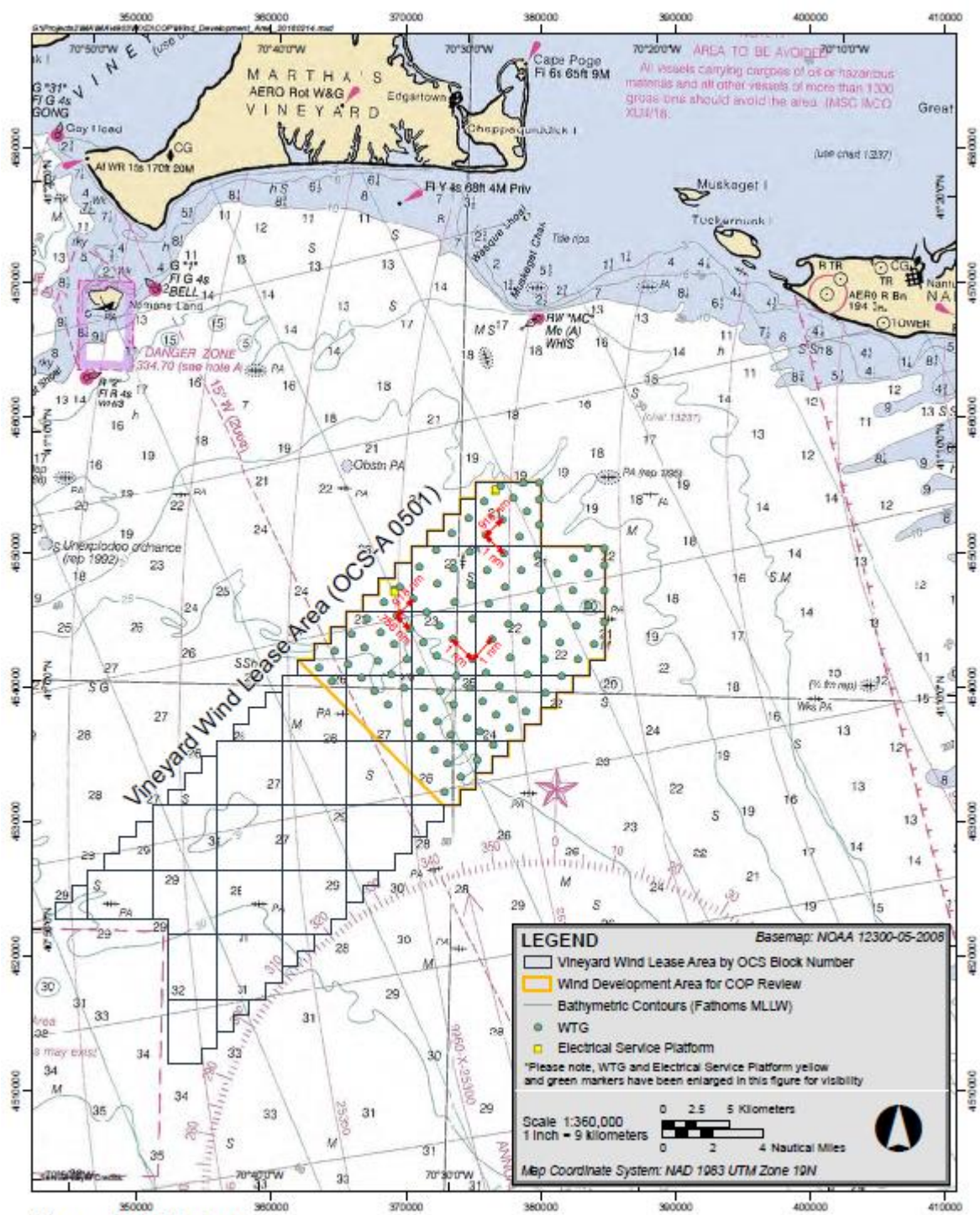
Grover J. Fugate, Executive Director
Coastal Resources Management Council

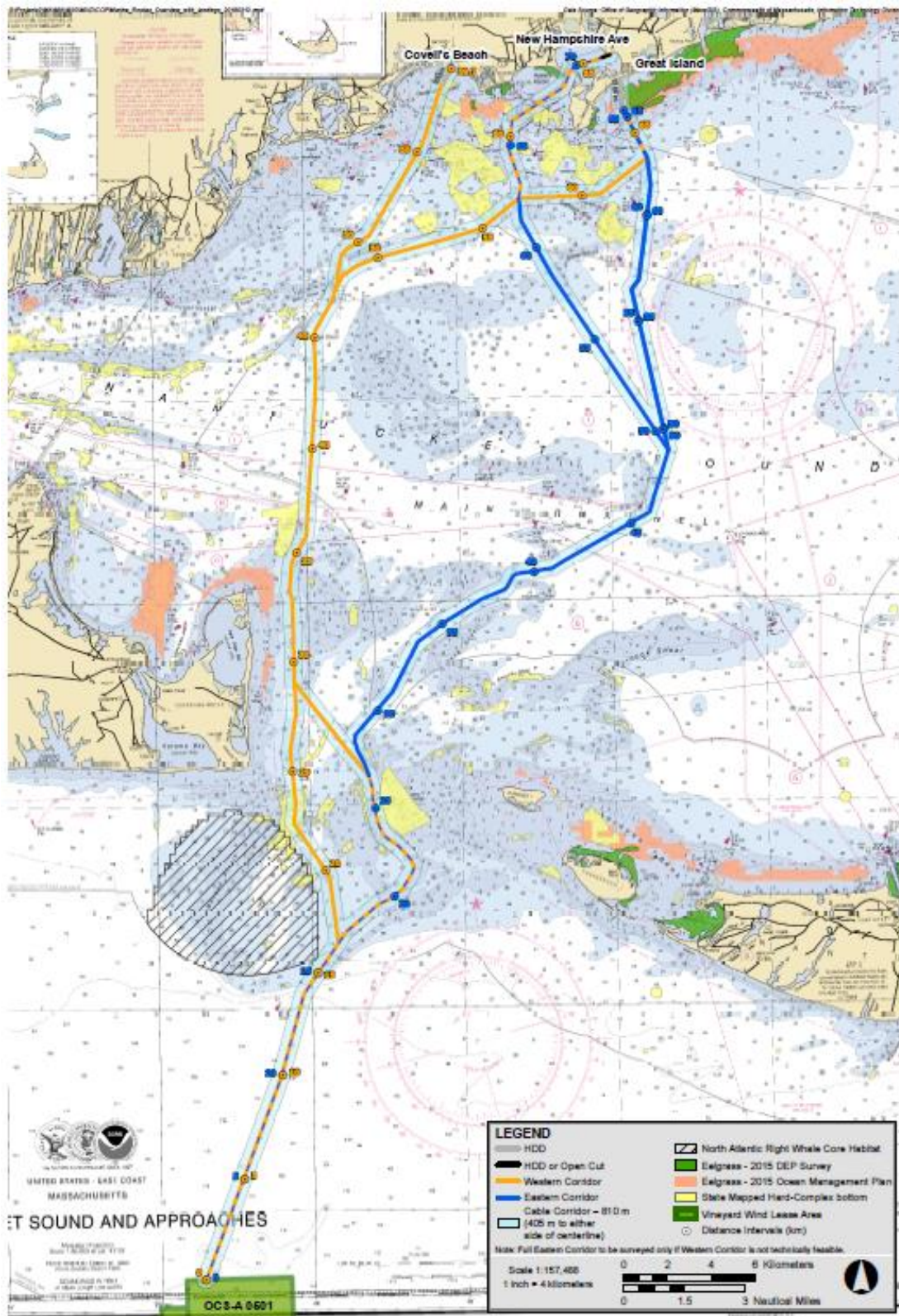


Vineyard Wind Project



Figure 1
RI and MA Lease Areas Overview





Vineyard Wind Project



Figure 3.1-15a
Export Cable Corridors